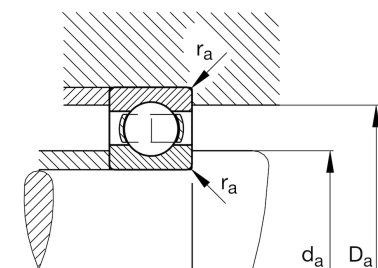
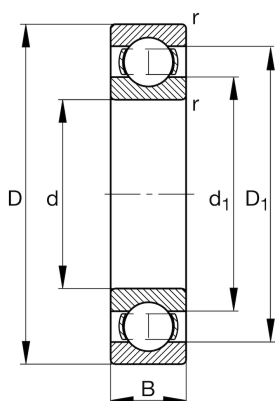
**FAG****61808**

Deep groove ball bearing

Schaeffler ID:
0554578860000Deep groove ball bearing 618, single row,
steel sheet metal cage

Technical information



Main Dimensions & Performance Data

d	40 mm	Bore diameter
D	52 mm	Outside diameter
B	7 mm	Width
C_r	4.930 N	Basic dynamic load rating, radial
C_{0r}	4.180 N	Basic static load rating, radial
C_{ur}	196 N	Fatigue load limit, radial
n_G	19.300 1/min	Limiting speed
n_{gr}	8.600 1/min	Reference speed
	35 g	Weight

Dimensions

r_{min}	0,3 mm	Minimum chamfer dimension
D_1	48,1 mm	Shoulder diameter outer ring
d_1	43,2 mm	Shoulder diameter inner ring

Mounting dimensions

$d_{a min}$	42 mm	Minimum diameter shaft shoulder
$D_{a max}$	50 mm	Maximum diameter of housing shoulder
$r_{a max}$	0,3 mm	Maximum fillet radius

Calculation factors

f_0	16,2	Calculation factor
-------	------	--------------------

Temperature range

T_{min}	-30 °C	Operating temperature min.
T_{max}	120 °C	Operating temperature max.